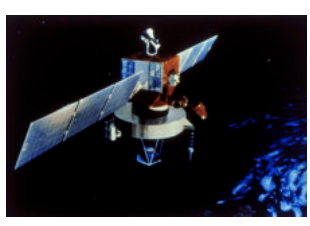
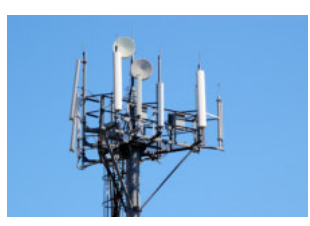


STU650 OBD Tracker



Key Features

- Driver Pattern Analysis (Harsh breaking, cornering, acceleration and speeding, Crash reconstruction)
- Circular/Polygonal Geo-fence
- Accident Alerts (Rollover notifications, High G-force notifications via SMS)
- Jamming Detection
- Various Report (distance, time and vehicle angle)
- Detect OBD-II Protocol Automatically
- Collect Information Fast & Accurate and Notify to user
- Read Extensive Engine Diagnostics (User Selectable), DTC and Vehicle ID



Suntech International Ltd.



A world wide leader in GPS tracker
Telematics Industry



STU650 OBD Tracker

UMTS/HSPA	850/1900Mhz and 900/2100 MHz 3GPP Release 7 5.76 Mb/s uplink, 7.2 Mb/s downlink
GSM	GSM 850/1900Mhz and GSM 900/1800 MHz
GPRS Communication	TCP / UDP
GPRS	Multi-slot Class 12 Support all 4 coding scheme (CS-1, CS-2, CS-3 and CS-4)
Setting Mode	By PC, GPRS or SMS
AT Command	GSM 07.07, 07.05
Commnad / Report sent via SMS	Supported
Back-up Server	Supported
GPS Receiver	56 channel (SMAS:WAAS, EGNOS, MASA) GPS & QZSS L1 C/A, Galileo E1B/L1, Compass ready
GPS Sensitivity	Tracking -162dBm Reauqisition -160dBm Cold start -148dBm,
A-GPS	Available
I/O Connection	J1939 protocols J1850(PWM or VPW) protocols ISO 9141-2 & ISO 14230, K-Line ISO 14230-4 Keyword Protocol 2000 ISO 15765-4 protcols(CAN)
Housing Dimension	74(W) x 46(L) x 25(T) mm
Weight	102g (with back-up battery)
Power Supply	DC 8~32V
Power Consumption	Active mode : 120~130mA @12V Sleep mode : less than 3mA @12V
Back-up Battery	Rechargeable 3.7V, Li-Polymer 210mAh
Electric Protection	ESD Protection, Overvoltage Protection
Operational Temperature Range	-30°C ~ +80°C
Certificates	CE, FCC, PTCRB



Suntech International Ltd.

B-1506, Great-valley, 32, 9-Gill, Digital-ro, Geumcheon-gu, Seoul Korea (Zip:153-709)

Tel : +82-2-6327-5656 Fax : +82-2-6327-5654 E-mail : info@suntechint.com Website : www.suntechint.com